



CAR PLATE HOLDER

The car plate holder consists of two parts: upper and lower. To assemble the plate holder, mount it to the vehicle and insert the license plate, please follow the steps below:

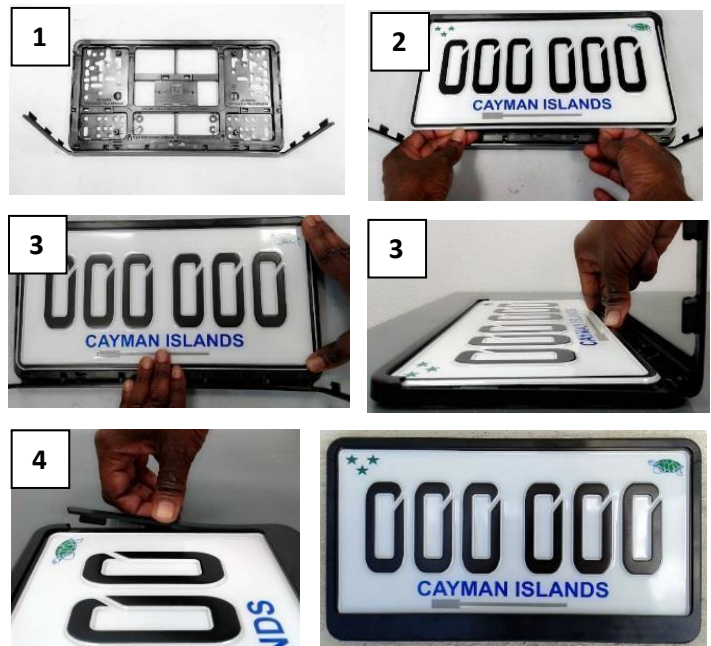
Warning: Read the complete instructions before starting. **Once the plate holder is closed, it cannot be opened without damaging it.**

1. Merge the lower and upper part by only clicking them together at the hinges of the lower part. **DO NOT CLOSE** the plate holder. (Screw the plate holder to the vehicle, using at least 2 of the pre-drilled holes in the plate holder that matches your vehicle holes. If no holes match, please open new holes).

2. Insert the license plate into the plate holder, from bottom to top.

3. Press the bottom part of the license plate into the holder until it clicks into the clip on the bottom of the holder (avoid pressing the RFID device), so that the complete license plate is inserted flat.

4. Close the plate holder and make sure all the side clippers are completely closed. Ready!



RFID WINDSHIELD LABEL INSTALLATION INSTRUCTIONS:

Warning: Your label contains an electronic device. Do not fold the label and carefully read the complete installation instructions.

1. This label must be installed in the center of the upper area of the windshield (behind the rearview mirror) of the vehicle that the printed information of the label belongs to.

2. Make sure the area is clean and dry.

3. If your vehicle's windshield has a window film, please consider the special instructions for window films.

4. Carefully peel the paper liner off the label, without touching the adhesive surface to avoid destruction of the label and apply it to the specified area.

Once the label is applied to the windshield, it can NOT be removed without destroying it. Ready!

Special instructions for window films:

Window films may interfere with this label; therefore you must ensure that your windshield has an area free of window film, with a minimum size of 10 cm height by 15 cm width, where the label will be installed. The label must be installed in the center of this window film free area, guaranteeing that the free space exceeds the size of the label by **at least 2.5 cm on each side**. Continue with step 4.

