

CAYMAN ISLANDS



Traffic Law, 2011

(2017 Revision)

TRAFFIC (AMENDMENT) REGULATIONS, 2019

(SL 19 of 2019)

Supplement No. 2 published with Legislation Gazette No. 11 dated 25th April, 2019.

PUBLISHING DETAILS



CAYMAN ISLANDS

**Traffic Law, 2011
(2017 Revision)**

**TRAFFIC (AMENDMENT) REGULATIONS, 2019
(SL 19 of 2019)**

Arrangement of Regulations

Regulation	Page
1. Citation and commencement	5
2. Amendment of regulation 3 of the Traffic Regulations (2017 Revision) - registration plates and coupons	5
3. Amendment of regulation 5 - display of plates	5
4. Amendment of regulation 6 - age qualifications	6
5. Amendment of regulation 19 - speedometers	6
6. Amendment of regulation 27 - fees for inspection, registration and licensing	7
7. Amendment of Schedule 1 - prescribed forms	21
8. Amendment of Schedule 2 - registration plates	21
9. Amendment of Schedule 3 - vehicle licence coupon	23

CAYMAN ISLANDS**Traffic Law, 2011
(2017 Revision)****TRAFFIC (AMENDMENT) REGULATIONS, 2019
(SL 19 of 2019)**

In exercise of the powers conferred by sections 22, 44, 56, 66 and 142 of the Traffic Law, 2011 the Cabinet makes the following Regulations —

Citation and commencement

1. (1) These Regulations may be cited as the Traffic (Amendment) Regulations, 2019.
- (2) These Regulations shall come into force immediately after the commencement of the *Traffic (Amendment) Law, 2018*.

Amendment of regulation 3 of the Traffic Regulations (2017 Revision) - registration plates and coupons

2. *The Traffic Regulations (2017 Revision)*, in these Regulations referred to as the “principal Regulations” are amended in regulation 3 as follows —
 - (a) in the marginal note, by deleting the word “coupons” and inserting the words “vehicle licences (coupons)”; and
 - (b) in paragraph (2), by deleting the word “coupons” and substituting the words “vehicle licences (coupons)”.

Amendment of regulation 5 - display of plates

3. The principal Regulations are amended in regulation 5 by deleting paragraph (1)(a) and substituting the following subparagraph —



- “(a) fails to —
- (i) display on a vehicle licence (coupon) on the top center of the front windscreen of the vehicle or in a location specified by the Director, so that it is visible at all times; or
 - (ii) where no front windscreen is fitted to the vehicle, keep the vehicle licence (coupon) within the vehicle or in a location specified by the Director; or”.

Amendment of regulation 6 - age qualifications

4. The principal Regulations are amended in regulation 6(1) as follows —
- (a) in subparagraph (b)(i), by deleting the word “or” where it appears after the semi-colon;
 - (b) in subparagraph (b)(ii), by deleting the word “and” where it appears after the semi-colon and substituting the word “or”;
 - (c) by inserting after subparagraph (b)(ii) the following —
“(iii) drive or tow any vehicle specified in subparagraph (a); and”;
 - (d) in subparagraph (c)(i), by deleting the word “or” where it appears after the semi-colon;
 - (e) in subparagraph (c)(ii), by deleting the full stop and substituting the word “; or”; and
 - (f) by inserting after subparagraph (c)(ii) the following —
“(iii) drive or tow any vehicle specified in subparagraph (a) or (b).”.

Amendment of regulation 19 - speedometers

5. The principal Regulations are amended in regulation 19 as follows —
- (a) in the marginal note, by adding after the word “Speedometers” the words “and odometers”;
 - (b) by renumbering regulation 19 as regulation 19(1); and
 - (c) by inserting the after regulation 19(1) the following paragraph —
“(2) A person who tampers with the mechanisms that control or affect the odometer’s reading or log of distance travelled by a vehicle commits an offence.”.



Amendment of regulation 27 - fees for inspection, registration and licensing

6. The principal Regulations are amended in regulation 27 as follows —

(a) in paragraph (3) —

(i) by inserting after the item and fee relating to “Trade plates, one pair (per quarter)” the following item and fee —

“Trade plates, one pair (per annum)	1,408”;
-------------------------------------	---------

(ii) by inserting after the item and fee relating to “Replacement of exhibition plates (motorcycles, mopeds and scooters) the following item and fee —

“Replacement of registration plates for invalid carriages	Free”;
---	--------

(iii) by deleting the item and fee relating to “Processing fee (termination, suspension and transfer of vehicle) and substituting the following items and fees —

“Processing fee (termination and suspension of vehicle)	Free
---	------

Processing fee (transfer of vehicle)	25”;
--------------------------------------	------

(b) by repealing paragraph (4) and substituting the following paragraph —

“(4) The fees payable in respect of the following itemized transactions are —

Item/Transaction	Fee
	\$

Vehicle Inspection —

Cars, trucks (not exceeding 4000 lbs maximum gross weight), omnibuses (not exceeding 15 seats), and trailers not exceeding 2000 lbs maximum gross weight —

For 14 months	35
---------------	----

For 26 months	70
---------------	----

For 38 months	105
For 62 months	175
Trucks (exceeding 4,000 lbs and not exceeding 33,000 lbs maximum gross weight), omnibuses (16 to 40 seats), taxis and limousines, and special vehicles (not exceeding 10,000 lbs maximum gross weight), and trailers exceeding 2,000 lbs but not exceeding 10,000 lbs maximum gross weight —	
For 14 months	40
For 26 months	80
For 38 months	120
For 62 months	200
Trucks (exceeding 33,000 lbs and not exceeding 60,000 lbs maximum gross weight), omnibuses (41 to 72 seats), trailers and special vehicles (exceeding 10,000 lbs maximum gross weight) —	
For 14 months	50
For 26 months	100
For 38 months	150
For 62 months	250
Motorcycles, mopeds and scooters —	
For 14 months	30
For 26 months	60
For 38 months	90
For 62 months	150
Exhibition vehicles —	
For 14 months	30
For 26 months	60
For 38 months	90



For 62 months	150
---------------	-----

Other Transactions

Duplicate certificate of registration	30
---------------------------------------	----

Change of category or particulars	25
-----------------------------------	----

Duplicate certificate of roadworthiness	25
---	----

Transfer of ownership	25
-----------------------	----

International permit	60
----------------------	----

Transfer from overseas driver's licence to driver's licence of the Islands	50
--	----

Learner's licence (for 6 months)	60
----------------------------------	----

Full driver's licence not exceeding Groups 0-3 (for one year)	25
---	----

Full driver's licence not exceeding Group 0-3 (for 3 years)	75
---	----

Full driver's licence not exceeding Group 0-3 (for 5 years)	125
---	-----

Full driver's licence not exceeding Group 0-3 (for 10 years)	250
--	-----

Taxi permit (per year)	50
------------------------	----

Full driver's licence, Group 0-4 (for one year)	40
---	----

Full driver's licence, Group 0-4 (for 3 years)	120
--	-----

Full driver's licence, Group 0-4 (for 5 years)	200
--	-----

Full driver's licence, Group 0-4 (for 10 years)	400
---	-----

Upgrade driver's licence (for the unexpired period of the licence)	40
Duplicate driver's licence	40
Driving test (road)	50
Public transport permit for one year	50
Duplicate public transport permit	50
Written test (driver's licence)	25
Duplicate vehicle licence (coupon)	10
Special electric vehicle permit	50";

- (c) by repealing paragraph (5) and substituting the following paragraph —
“(5) The vehicle licence fees in respect of the following vehicles are —

Vehicle Description	Fee
	\$
Private motor cars —	
Not exceeding 2,500 cc or not exceeding 4 seats excluding the driver —	
For 12 months	180
For 24 months	360
For 36 months	540
For 60 months	900
Exceeding 2,500 cc or not exceeding 8 seats excluding the driver —	
For 12 months	200
For 24 months	400
For 36 months	600
For 60 months	1,000
Hummer (H1) —	



For 12 months	1,000
For 24 months	2,000
For 36 months	3,000
For 60 months	5,000
Hummer (all other types) —	
For 12 months	500
For 24 months	1,000
For 36 months	1,500
For 60 months	2,500

Rental motor cars —

Not exceeding 2,500 cc or not exceeding 4 seats excluding the driver —

For 12 months	365
For 24 months	730
For 36 months	1,095
For 60 months	1,825

Exceeding 2,500 cc or not exceeding 8 seats excluding the driver —

For 12 months	400
For 24 months	800
For 36 months	1,200
For 60 months	2,000

Motorcycles —

Not exceeding 50 cc —

For 12 months	100
---------------	-----

For 24 months	200
For 36 months	300
For 60 months	500
Exceeding 50 cc and not exceeding 125 cc —	
For 12 months	125
For 24 months	250
For 36 months	375
For 60 months	625
Exceeding 125 cc —	
For 12 months	200
For 24 months	400
For 36 months	600
For 60 months	1,000
Rental motorcycles —	
Not exceeding 50 cc —	
For 12 months	225
For 24 months	450
For 36 months	675
For 60 months	1,125
Exceeding 50 cc and not exceeding 125 cc —	
For 12 months	275
For 24 months	550
For 36 months	825
For 60 months	1,375



Exceeding 125 cc —	
For 12 months	325
For 24 months	650
For 36 months	975
For 60 months	1,625

Pedal cycles (exceeding 250 watts or exceeding 15mph (maximum travelling speed)) —

Not exceeding 2,500 cc —	
For 12 months	100
For 24 months	200
For 36 months	300
For 60 months	500

Taxis and limousines (not exceeding 15 seats excluding the driver) —

Not exceeding 2,500 cc —	
For 12 months	300
For 24 months	600
For 36 months	900
For 60 months	1,500

Exceeding 2,500 cc —	
For 12 months	325
For 24 months	650
For 36 months	975
For 60 months	1,625

Omnibuses

Not exceeding 15 seats or not exceeding 7 feet overall width —

For 12 months	300
For 24 months	600
For 36 months	900
For 60 months	1,500

16 to 40 seats or not exceeding 7 ½ feet overall width —

For 12 months	450
For 24 months	900
For 36 months	1,350
For 60 months	2,250

41 to 60 seats or not exceeding 8 feet overall width —

For 12 months	850
For 24 months	1,700
For 36 months	2,550
For 60 months	4,250

61 to 72 seats or exceeding 8 feet overall width —

For 12 months	900
For 24 months	1,800
For 36 months	2,700
For 60 months	4,500

Rental Omnibuses

Not exceeding 15 seats or not exceeding 7 feet overall width —



For 12 months	400
For 24 months	800
For 36 months	1,200
For 60 months	2,000

School buses

Not exceeding 15 seats or not exceeding 7 feet overall width —

For 12 months	150
For 24 months	300
For 36 months	450
For 60 months	750

16 to 40 seats or not exceeding 7 ½ feet overall width —

For 12 months	200
For 24 months	400
For 36 months	600
For 60 months	1,000

41 to 60 seats or not exceeding 8 feet overall width —

For 12 months	400
For 24 months	800
For 36 months	1,200
For 60 months	2,000

61 to 72 seats or exceeding 8 feet overall width —

For 12 months	425
For 24 months	850
For 36 months	1,275

For 60 months	2,125
School bus owned and operated by a school or by the parent and teachers' association of a school, and a church bus	Free

Private trucks

Not exceeding 4,000 lbs maximum gross weight, or not exceeding 2,000 cc, or not exceeding 6 feet overall width —

For 12 months	250
For 24 months	500
For 36 months	750
For 60 months	1,250

Exceeding 4,000 lbs but not exceeding 8,500 lbs maximum gross weight, or not exceeding 7 feet overall width —

For 12 months	400
For 24 months	800
For 36 months	1,200
For 60 months	2,000

Exceeding 8,500 lbs but not exceeding 14,000 lbs maximum gross weight, or not exceeding 7½ feet overall width —

For 12 months	500
For 24 months	1,000
For 36 months	1,500
For 60 months	2,500

Exceeding 14,000 lbs but not exceeding 33,000 lbs maximum gross weight, or not exceeding 8 feet overall width —

For 12 months	550
---------------	-----



For 24 months	1,100
For 36 months	1,650
For 60 months	2,750
Exceeding 33,000 lbs but not exceeding 66,000 lbs maximum gross weight, or not exceeding 8 feet and 6 inches overall width —	
For 12 months	750
For 24 months	1,500
For 36 months	2,250
For 60 months	3,750

Rental trucks

Not exceeding 4,000 lbs maximum gross weight, or not exceeding 2,000 cc, or not exceeding 6 feet overall width —

For 12 months	400
For 24 months	800
For 36 months	1,200
For 60 months	2,000

Exceeding 4,000 lbs but not exceeding 8,500 lbs maximum gross weight, or not exceeding 7 feet overall width —

For 12 months	500
For 24 months	1,000
For 36 months	1,500
For 60 months	2,500

Exceeding 8,500 lbs but not exceeding 14,000 lbs maximum gross weight, or not exceeding 7 ½ feet overall width —

For 12 months	600
For 24 months	1,200

For 36 months	1,800
For 60 months	3,000
Exceeding 14,000 lbs but not exceeding 33,000 lbs maximum gross weight, or not exceeding 8 feet overall width —	
For 12 months	650
For 24 months	1,300
For 36 months	1,950
For 60 months	3,250

Trailers

Roll on trailer —

For 12 months	20
For 24 months	40
For 36 months	60
For 60 months	100

Trailer other than roll on trailer —

Not exceeding 2,000 lbs maximum gross weight, or not exceeding 7 feet overall width —

For 12 months	50
For 24 months	100
For 36 months	150
For 60 months	250

Exceeding 2,000 lbs but not exceeding 10,000 lbs maximum gross weight, or not exceeding 8 feet overall width —

For 12 months	120
For 24 months	240



For 36 months	360
For 60 months	600
Exceeding 10,000 but not exceeding 66,000 lbs maximum gross weight, or not exceeding 8 feet and 6 inches overall width —	
For 12 months	420
For 24 months	840
For 36 months	1,260
For 60 months	2,100

Rental trailers

Not exceeding 2,000 lbs maximum gross weight, or not exceeding 7 feet overall width —

For 12 months	100
For 24 months	200
For 36 months	300
For 60 months	500

Exceeding 2,000 but not exceeding 10,000 lbs maximum gross weight, or not exceeding 8 feet overall width —

For 12 months	400
For 24 months	800
For 36 months	1,200
For 60 months	2,000

Special purpose vehicles

For enforcement use by the Police	Free
-----------------------------------	------

or Government

Electric vehicles shall pay the appropriate fee based on vehicle category, seating capacity, weight or engine power output equivalent as determined by the Director.

Special vehicles and oversize vehicles (registration only)

One-time fee payable for each of the following is —

Backhoe, loader or forklift not exceeding 10,000 lbs maximum gross weight	1,100
Other special vehicle not exceeding 10,000 lbs maximum gross weight	1,100
Special vehicle exceeding 10,000 lbs but not exceeding 66,000 lbs maximum gross weight	1,500
Special vehicle exceeding 66,000 lbs maximum gross weight	2,100
Oversize vehicle	1,000
Oversize truck exceeding either 66,000 lbs maximum gross weight, 8 feet and 6 inches overall width or 40 feet overall length	2,100
Oversize trailer exceeding either 66,000 lbs maximum gross weight, 8 feet and 6 inches overall width or 40 feet overall length	2,100
Road maintenance equipment (includes graders, rollers, pavers, trenchers) for Government	Free
Oversize vehicle or special vehicle for enforcement use by the Police or Government	Free

For single movement of Oversize



and Special Vehicle —

Permit (without Police escort)	200
Permit (with Police escort), per man-hour (minimum one man-hour)	100
Invalid carriage	Free”.

Amendment of Schedule 1 - prescribed forms

7. The principal Regulations are amended in Schedule 1 as follows —

(a) in Form T.R. 4 —

(i) by deleting the word “travelling” where it appears in that form;

(ii) in paragraphs (h)(v) and (vi) and (j)(iii) and (iv) —

(A) by deleting the words “60,000 lbs” and substituting the words “66,000 lbs”; and

(B) by deleting the words “8 feet” and substituting the words “8 feet and 6 inches”;

(iii) by deleting the full stop at the end of paragraph (I); and

(iv) by inserting after paragraph (I) the following paragraph —

“(m) Pedal Cycles (exceeding 250 watts or exceeding 15 mph (maximum travelling speed)) —

(i) rental

(ii) private use.”; and

(b) in Form T.R. 11 by deleting the words “per quarter” and “\$352”.

Amendment of Schedule 2 - registration plates

8. The principal Regulations are amended by repealing Schedule 2 and substituting the following Schedule —

“SCHEDULE 2

(Regulation 3)

REGISTRATION PLATES

- | | |
|---|--|
| 1. Private motor cars, private trucks (private/commercial), private motorcycles, trailers (private/commercial), school vehicles (PTA, Education | 1. White background consisting of black numbers showing graphic designs of three green stars with blue outlines and a green turtle with blue outlines. |
|---|--|

- Department), church vehicles, special and oversize vehicles.
2. Personalized plates.
 2. (i) White background consisting of black letters or numbers or alpha-numeric numbers;
 - (ii) White background consisting of black numbers showing underwater scenery of three stingrays;
 - (iii) White background with black numbers showing a pair of West Indian whistling ducks;
 - (iv) White background with black letters showing underwater scenery of coral.
 3. Tour, omnibus, water sports and taxi plates (public transport only), school vehicles (public transport), station wagons licensed as taxis.
 3. White background consisting of red numbers showing graphic designs of three green stars with blue outlines and a green turtle with blue outlines.
 4. Quincentennial plates.
 4. White background consisting of black numbers showing Cayman Islands Quincentennial in multi-colour logo with the prefix “Q”.
 5. Rental cars, trucks (not exceeding 33,000 lbs maximum gross weight), omnibuses (seating capacity not exceeding 15 seats), trailers not exceeding 10,000 lbs maximum gross weight and rental motorcycles.
 5. White background consisting of green numbers showing graphic designs of three green stars with blue outlines and a green turtle with blue outlines and the words “RENTAL” above the numbers.
 6. Invalid carriages.
 6. White background with blue numbers and the prefix “DV” before



the letters.

- | | |
|-----------------------------------|--|
| 7. Exhibition vehicles. | 7. White background consisting of black numbers showing graphic designs of three green stars with blue outlines and a green turtle with blue outlines and the words “EXHIBITION” above the numbers or alpha-numeric numbers. |
| 8. Temporary plates. | 8. White background consisting of black numbers showing graphic designs of three green stars with blue outlines and a green turtle with blue outlines and the words “TEMPORARY” above the numbers or alpha-numeric numbers. |
| 9. Special and oversize vehicles. | 9. White background consisting of black numbers or alpha-numeric numbers showing graphic designs of three green stars with blue outlines and a green turtle with blue outlines. |
| 10. Trade plates. | 10. White background consisting of black numbers showing graphic designs of three green stars with blue outlines and a green turtle with blue outlines and the words “TRADE” above the numbers or alpha-numeric numbers.”. |

Amendment of Schedule 3 - vehicle licence coupon

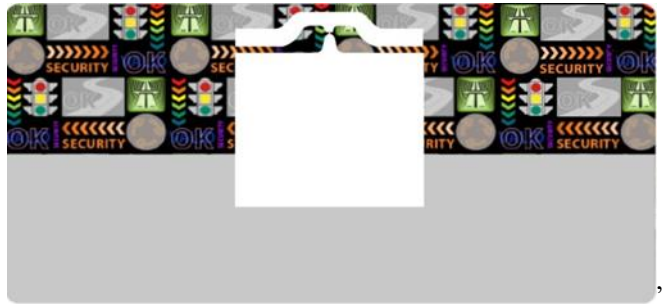
9. The principal Regulations are amended by repealing Schedule 3 and substituting the following Schedule —

“SCHEDULE 3

(Regulation 3)

VEHICLE LICENCE (COUPON)

The vehicle licence (coupon) shall be in the form of a holographic windshield label in a format approved by the Director and illustrated bearing the registration number of the vehicle, the vehicle licence (coupon) number and the issue date, and such other information as may be determined from time to time relative to the identification of the vehicle and the owner as follows —



Made in Cabinet the 23rd day of April, 2019.

Kim Bullings
Clerk of the Cabinet